

Tempo Samba

Handwritten musical score for the first system. It consists of five staves. The top staff is a single melodic line in treble clef, starting with a *ff* dynamic marking. The second and third staves are a piano accompaniment in treble and bass clefs, with a *f* dynamic marking. The fourth and fifth staves are a bass line in bass clef, also with a *f* dynamic marking. The music is in 2/4 time and features a rhythmic pattern characteristic of Samba.

Handwritten musical score for the second system. It consists of five staves. The top staff is a single melodic line in treble clef, starting with a *mp* dynamic marking and a first ending bracket. The second and third staves are a piano accompaniment in treble and bass clefs, with a *mp* dynamic marking. The fourth and fifth staves are a bass line in bass clef, also with a *mp* dynamic marking. The music continues the Samba style with a first ending bracket in the top staff.

Handwritten musical score for the first system, consisting of five staves. The notation includes various notes, rests, and dynamic markings. The first staff begins with a treble clef and a key signature of one flat. The second staff contains a piano marking *mp*. The third staff includes a marking *M6*. The fourth and fifth staves continue the melodic and harmonic development of the piece.

Handwritten musical score for the second system, starting with a boxed number **3** in the top left corner. It consists of five staves. The first staff begins with a treble clef and a key signature of one flat, and includes a dynamic marking *ff*. The second staff contains a marking *ff* and a 6/8 time signature. The third and fourth staves continue the musical notation, with the fourth staff also featuring a *ff* marking. The fifth staff concludes the system with a double bar line.

tempo Samba

8-1

1

mf

8

mf

b7

8

b7

Handwritten musical score, first system. It consists of two staves. The upper staff contains a melodic line with various note values and rests. The lower staff contains a bass line with fewer notes. Dynamics markings include *ff* and *mf*. A circled number '5' is written above the first measure of the upper staff.

Handwritten musical score, second system. It consists of two staves. The upper staff continues the melodic line with more complex rhythmic patterns. The lower staff continues the bass line. Dynamics markings include *ff* and *mf*. A circled number '8' is written above the first measure of the upper staff.

Handwritten musical score, third system. It consists of two staves. The upper staff features a melodic line with some slurs. The lower staff continues the bass line. Dynamics markings include *ff* and *mf*.

Handwritten musical score, fourth system. It consists of two staves. The upper staff has a melodic line with many notes and slurs. The lower staff continues the bass line. Dynamics markings include *ff* and *mf*. A circled number '8' is written above the first measure of the upper staff.

Handwritten musical score, fifth system. It consists of two staves. The upper staff has a melodic line with some rests and slurs. The lower staff continues the bass line. Dynamics markings include *ff* and *mf*. A circled number '8' is written above the first measure of the upper staff.

Handwritten musical score, sixth system. It consists of two empty staves.

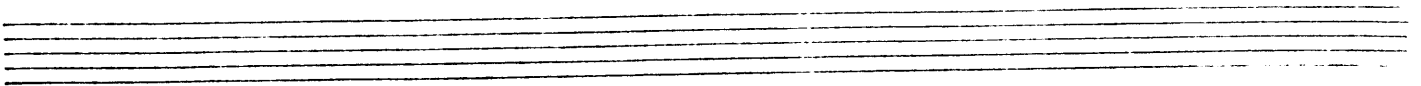
Handwritten musical score for the first system. It consists of four staves. The top two staves contain complex melodic and harmonic lines with many beamed notes and slurs. The bottom two staves appear to be accompaniment, with some chords and rhythmic patterns. A dynamic marking 'f' is present in the second measure of the second staff. There are also some slanted lines and repeat signs in the lower staves.

Handwritten musical score for the second system. It consists of four staves. The top two staves have melodic lines with slurs and some dynamic markings like 'p'. The bottom two staves have accompaniment with chords and rhythmic patterns. A dynamic marking 'pp' is present in the first measure of the bottom-left staff. There are also some slanted lines and repeat signs in the lower staves.

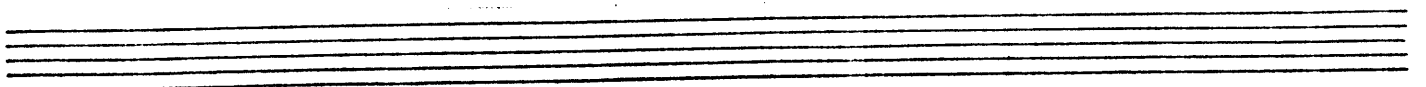
Handwritten musical score system 1, consisting of four staves. The top staff is a treble clef with a melodic line. The second staff is a bass clef with a bass line. The third and fourth staves are bass clefs containing chordal accompaniment. The system contains four measures of music, with various notes, rests, and chord symbols (5, 7, 5) visible.

Handwritten musical score system 2, consisting of four staves. The top staff is a treble clef with a melodic line. The second staff is a bass clef with a bass line. The third and fourth staves are bass clefs containing chordal accompaniment. The system contains four measures of music, with various notes, rests, and chord symbols (5, 7, 5) visible.

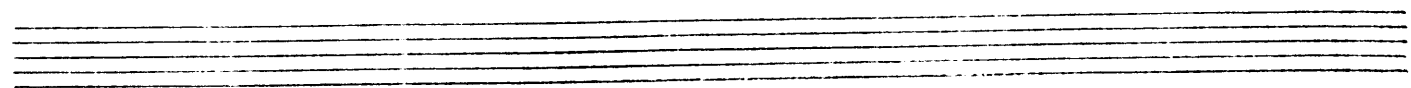
Handwritten musical score for the first system. It consists of four systems of staves. The first system has two staves, the second has two staves, the third has two staves, and the fourth has two staves. The notation includes various note values, rests, and dynamic markings such as *mf* and *f*. There are also some handwritten annotations and a measure with a circled '8'.



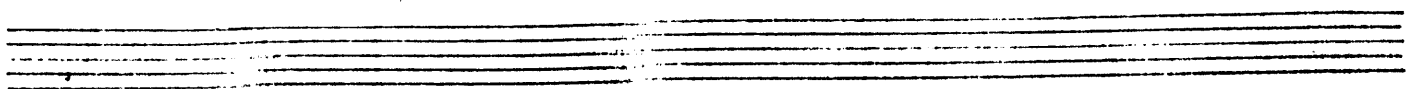
Handwritten musical score for the second system. It consists of three systems of staves. The first system has two staves, the second has two staves, and the third has two staves. The notation includes various note values, rests, and dynamic markings such as *mf*. There are also some handwritten annotations and a measure with a circled '8'.



Handwritten musical score for the first system, consisting of five staves. The notation is complex, featuring many beamed notes and accidentals. A circled number '8' is present in the top staff. The system concludes with a double bar line and a fermata-like symbol.



Handwritten musical score for the second system, consisting of five staves. The notation is complex, featuring many beamed notes and accidentals. A circled number '9' is present in the top staff. The system concludes with a double bar line and a fermata-like symbol.



Handwritten musical score, first system. It consists of five staves. The top staff contains a melodic line with various notes and rests. A circled number '10' is written above the staff. The second and third staves are mostly empty, with some notes in the third measure. The fourth and fifth staves contain bass lines with notes and rests. There are some handwritten annotations like '7' and 'H5'.

Handwritten musical score, second system. It consists of five staves. The top staff contains a melodic line with notes and rests. The second staff contains a complex accompaniment with many notes and rests. The third and fourth staves contain bass lines with notes and rests. The fifth staff contains a bass line with notes and rests. There are some handwritten annotations like 'H3' and '7'.



Handwritten musical score for the first system, consisting of five staves. The top staff contains a melodic line with notes, rests, and dynamic markings such as *ff* and *f*. The second staff features a rhythmic accompaniment with notes and rests, also marked with *ff*. The third staff has a bass line with notes and rests, including a circled note. The fourth and fifth staves contain chords and rests, with some notes marked with *b* and *+*. The system concludes with a double bar line.

Handwritten musical score for the second system, consisting of five staves. The top staff begins with a melodic line and includes a circled note with an *8-* marking above it. The second staff has a rhythmic accompaniment with notes and rests, marked with *f*. The third staff contains a bass line with notes and rests, including a circled note. The fourth and fifth staves feature chords and rests, with notes marked with *b* and *+*. The system concludes with a double bar line.